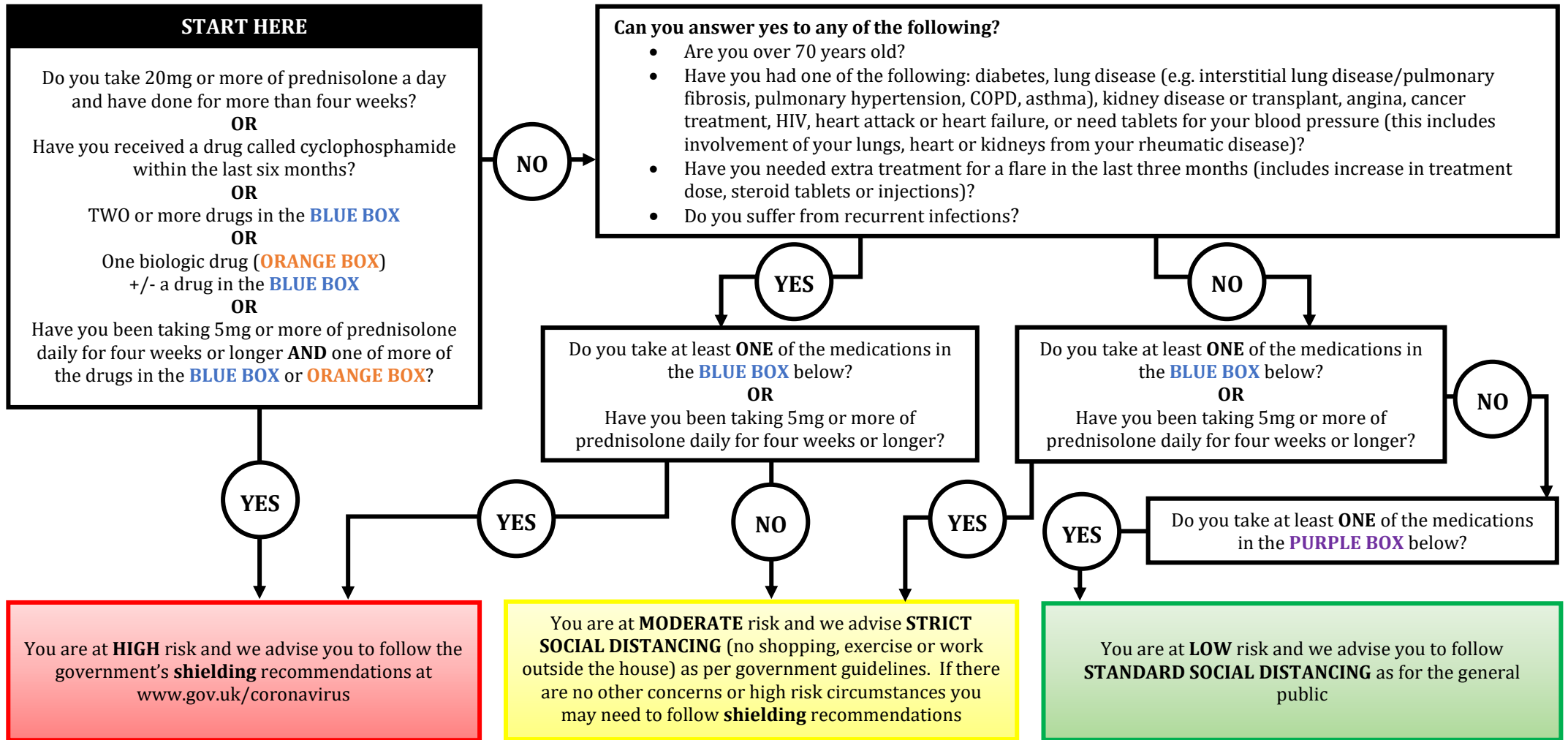


Guide to social distancing for Rheumatology patients

(based on guidelines from the British Society for Rheumatology and NHS England)



BLUE BOX - Disease Modifying Drugs (DMARDs): azathioprine, leflunomide, methotrexate, mycophenolate (mycophenolate mofetil or mycophenolic acid), cyclophosphamide, tacrolimus, sirolimus

PURPLE BOX - hydroxychloroquine, sulfasalazine, mesalazine

ORANGE BOX – Biologic Drugs: rituximab (within the last 12 months); or anti-TNF drugs (adalimumab, certolizumab, etanercept, golimumab, infliximab); abatacept; anakinra; apremilast; baricitinib; belimumab; canakinumab; ixekizumab; sarilumumab; secukinumab; tofacitinib; tocilizumab; ustekinumab; or any biologic biosimilars